

FORSYTHE FAMILY FARMS 2009 INC.

Cultivating Curiosity, Planting Knowledge

Fall 2010

Farmers Feed Cities

Farmers Feed Cities is an agriculture awareness campaign working with farmers across Ontario. Farm families have been growing food for generations, and we're proud of our tradition of providing, safe, reliable food that tastes great!

Forsythe Family Farms 2009 Inc is participating in the campaign this summer and fall. Part of our mission is to keep people connected to their rural roots and understanding where their food comes from. It is only with this understanding that our agricultural heritage and farmland can be preserved from encroaching urbanization and our food supply kept secure.

A farmer wears many hats – scientist, veterinarian, engineer, nutritionist, weather forecaster, business manager, mechanic, biologist and forest ranger to name just a few. There are many different types of farms some specializing in one crop or commodity others are more mixed. Our farm falls under the horticulture category

– we are a market garden growing fruits and vegetables for fresh market. We have chosen to market directly to the public – challenging yet satisfying.

Each farm is as unique as each family is. Personal heritage and preferences play a role in determining the type of farm as does climate, soil conditions, geography and the community it connects with. Farmers need people to grow and produce food for. Cities need farmers for that food.

There are many similarities between urban and rural populations. The basic needs of food, shelter and safety are the same, but we have more space here in the country. Rural and urban communities are dependent on each other for goods and services that they are unable to provide for themselves. It is through understanding our differences and

supporting each other that a healthy relationship can be maintained leading to strong communities.

Visiting farms gives students the opportunity to get past the literature and learn through experience how their food is produced, connecting their relationship with nature and farms to their daily lives through what they eat, drink and the products they use.

For more info check out:
farmersfeedcities.com
oafe.org
gecdsb.on.ca
geocities.com



Two Great Locations

You now have a choice of two locations for your tours — Markham and Greenbank. Our Markham farm is well established having hosted school groups for over 20 years. We're using this knowledge and programming to establish tours at our Greenbank farm located just 10 minutes north of Port Perry and 10 minutes east of Uxbridge in the Durham region.

Experience the countryside as it used to be. Enjoy the peaceful atmosphere, the beauty of the rolling hills and the sounds of nature. We are out in the country again.

Join us at either location for a tour that will cultivate the children's curiosity and plant knowledge.

Fall is Fun on the Farm!

Farms hold a deep fascination for children and the fall harvest season is a great time to visit. It's pumpkin picking time!

Our tours incorporate interactive, hands on, age appropriate activities that help the children connect the farm to their world through the food they eat and the products they use.

With the variety of habitats at both locations, children – preschool to grade 3 can discover animal and plant life and the seasons using their five senses. What better way to learn about where their food comes from.

For students in grade 3 & 4, we offer Science in Agriculture workshops that provide an opportunity to study one

main concept required in their curriculum, but also essential to farmers for their success.

Our fall tours are very popular and the schedule fills up fast so don't delay.

Call Myrna or Leslie at
905-887-1086 to
book your tour.



Tours Available in Markham and Greenbank 905-887-1086

Check us out at ForsytheFamilyFarms.com

CURRICULUM CONNECTIONS

A VISIT TO FORSYTHE FAMILY FARMS

The farm provides a rich environment for covering topics found in the Science and Technology Curriculum strands – Life Systems for grades 1-4 and Earth and Space Systems for grades 1-5. Topics such as plants, animals, soil and weather are introduced to all children in our farm tour. These topics are an integral part of farming and food production and relate to the children's lives in what they eat, drink and use everyday. Activities are adapted to the children's age and comprehension level.



KINDERGARTEN:

Students will experience the farm with an emphasis on using their five senses. Through songs, hands on activities, discussion and play they have the opportunity to explore and experience what farming is all about.

GRADE 1 - GRADE 3 students will have the opportunity to:

Field Session

- Plant a strawberry plant or pick the crop currently in season. i.e. strawberries/pumpkins
- Identify parts of the plant, their function and use
- Review the seasons, the accompanying changes and priorities of the farmer's job
- Identify the needs of plants for healthy growth and how to care for them

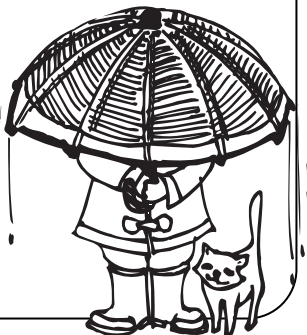
Animal Session

- Observe and feed farm animals in their natural setting
- Identify the farm animal's needs for survival, how these needs are met and compare their needs to ours and other living things
- Identify and compare our characteristics to farm animals, their similarities and differences
- Examine the role farm animals play in meeting our daily needs
- Differentiate between pets, farm and wild animals, determine similarities and differences

RAINY DAYS:

There are a wide variety of activities to do on a rainy day. The following is just a sampling and they **are not** restricted to use just during adverse weather.

- Manipulate farm toys, explore how they work and what the farmer uses them for
- Investigate honey bees, pollination and their importance to plants and the farmer
- Identify parts of the plant that we eat
- Investigate composting and its importance for soil health
- Investigate soil, the different types and its components
- Investigate food systems, how food gets from the farm to their table
- Identify products that farm animals provide for our daily use and which animals provide them



Our activities aim to reinforce the vital link between the farm and the children's daily lives by cultivating their natural curiosity and encouraging the use of all their senses. Emphasis in the tours will be placed on areas specified in the curriculum guidelines as follows-

- | | |
|----------|---|
| Grade 1- | Characteristics and needs of living things — Daily and seasonal changes |
| Grade 2- | Growth and changes in animals — Air and water |
| Grade 3- | Growth and changes in plants — Soil |

Science in Agriculture Workshops

- | | |
|----------|--------------------------|
| Grade 3- | Soils in the environment |
| Grade 4- | Habitats and communities |

Printed material is provided for follow-up activities in the classroom.

While it is important to make our farm tour educational, we also want the children to discover the fun side of farms. Time spent in our farm's playgrounds is an important part of the tour. A wagon ride through our fields gives the children a sense of the scope of farming and how it relates to the backyard garden.

FORSYTHE FAMILY FARMS 2009 INC.
10539 Kennedy Rd., Markham & 1025 Cragg Rd., Greenbank
Phone: 905-887-1086 ForsytheFamilyFarms.com
